

CPC Combination Sets are now completely available in Derwent World Patents Index

CPC combination sets are groups of CPC symbols linking multiple features of an invention. Patent examiners assign these combination sets in special technical fields to classify different aspects of the main inventive feature. Since July 2017, CPC combination sets have been made available for DWPI updates, while backfile data have been included in the course of 2018. This powerful CPC feature can now be used for more than 1 million DWPI records (2019/02).

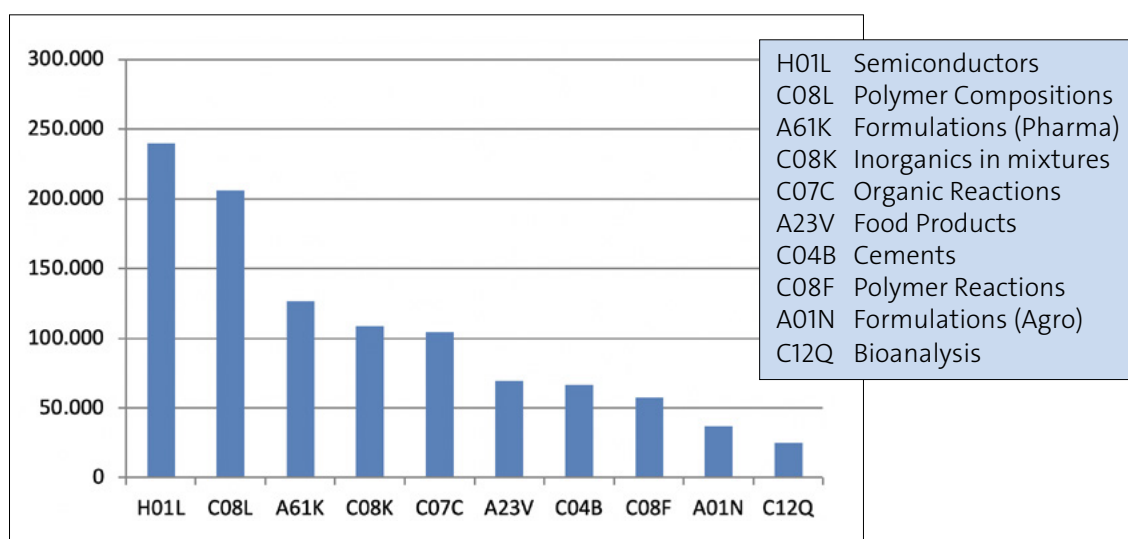
Benefits of searching CPC Combination Sets include:

- **Search precision.** Searching multiple CPC codes in the same CPC combination set retrieves highly relevant answers.
- **Unique access points.** Many CPC codes are unique to CPC combination sets which have not been available before.
- **Value for novelty searching.** The patents retrieved from a search for multiple CPCs in a single combination set are likely to be of interest to those assessing the novelty of an invention.

MAJOR TECHNICAL FIELDS OF CPC COMBINATION SETS

CPC combination sets are mainly assigned to patents classified in section C (chemistry) of the CPC, followed by sections A and H. The largest part includes patents from the polymer area, in particular polymeric mixtures and polymer reactions. In organic chemistry combination sets are used to link products and chemical processes. Compositions with more than one active ingredient have also combination sets assigned, including pharmaceutical, agrochemical and inorganic mixtures like cements.

Major CPC Subclasses of CPC combination sets in DWPI*



*no. of records in DWPI, as per January 7, 2019

SEARCHING FOR CPC AND CPC COMBINATION SET CODES

The traditional CPC search options have been extended to take care of the particular requirements of CPC combination set codes (STN classic).

- The new search options allow to search for multiple CPC codes within one combination set using the (S)-proximity operator.
- The new search field /CPC.CS can be used to search for CPC codes occurring in a CPC combination set.
- CPC combination set codes have the attribute COMBINATION SET assigned which is searchable in the field /CPC.KW.

Searching for	Search Query
CPC codes in general	=> S A61K0039-42/CPC => S A61K0039/CPC => S A61K/CPC
CPC codes plus all narrower codes	=> S A61K0039-395+NT/CPC
CPC codes of a combination set	=> S A61K0039-42/CPC.CS => S A61K0039-42/CPC(S)COMBINATION SET/CPC.KW*
Multiple CPC codes within a single combination set	=> S (A61K0039-42(S)A61K0031-70)/CPC
Regular CPC codes with attributes	=> S A61K0039-42/CPC(S)INVENTION/CPC.KW
CPC combination set codes with attributes	=> S C08L0023-10/CPC.CS(S)INVENTION/CPC.KW

* (T)-proximity operator also possible

DISPLAYING CPC AND CPC COMBINATION SET CODES

DWPI provides a deduplicated set of current CPC codes for the patent family at the invention level (classic Derwent data). The CPC data for individual family members are available in full detail at the member patent level. CPC combination set codes are available at both levels.

All CPC codes of the invention level can be displayed with the STN standard display format CPC which is part of the predefined display formats ALL, FULL, MAX, CODE and TRIAL. The tabular display CPC.TAB provides all CPC codes with major attributes like the classification value (invention, additional).

Example: CPC combination sets of the invention level

```

=> D FULL
L1 ANSWER 1 OF 38166 WPIX COPYRIGHT 2019 CLARIVATE ANALYTICS on STN
AN 2018-96669X [201881] WPIX
TI Pneumatic tire used for e.g. large passenger vehicles, heavy-load
vehicles e.g. trucks and buses, large sport utility vehicles or light
trucks, comprises outer apex formed from rubber composition having
specific thermal conductivity .....
PA (SUMR-C) SUMITOMO RUBBER IND LTD
PI US 20180345739 A1 20181206 (201881)* EN 10[3]
EP 3412719 A1 20181212 (201883) EN
CN 108976487 A 20181211 (201901) ZH
JP 2018203882 A 20181227 (201903) JA 13 .....
CPC B60C0001-00; B60C0015-0607; B60C2001-0058; C08K2201-014; C08K0003-04;
C08K0007-06; C08L0021-00; C08L0007-00; C08K0007-06, C08L0021-00;
C08K0003-04, C08L0021-00; C08K0003-04, C08K0007-06, C08L0007-00,
C08L0009-06
.....

=> D CPC.TAB
CPC CODE VERSION POS INV CC ASSIGNMENT DATE STAT
-----
B60C0001-00 (20130101) L I 0
B60C0015-0607 (20130101) F I 0
B60C2001-0058 (20130101) L A 0
C08K2201-014 (20130101) L A 0
C08K0003-04 (20130101) L I 0
C08K0007-06 (20130101) L I 0
C08L0021-00 (20130101) L I 0
C08L0007-00 (20130101) L I 0
C08K0007-06 (20130101) L I 0, Comb. Set 1
C08L0021-00 (20130101) L I 0. Comb. Set 2
C08K0003-04 (20130101) L I 0, Comb. Set 3
C08L0021-00 (20130101) L I 0.
C08K0003-04 (20130101) L I 0,
C08K0007-06 (20130101) L I 0,
C08L0007-00 (20130101) L I 0,
C08L0009-06 (20130101) L I 0.

```

The example above includes three CPC combination sets with multiple CPC codes, classifying three different polymer compositions. The CPC codes of each combination set are separated by commas. The end of a combination set is indicated by a semicolon in the CPC format or by a period in the CPC.TAB format.

The CPC information of the member patent level comprises the current set of CPC codes for each family member together with the original CPCs for that document. At this level the complete set of CPC attributes is available and can be displayed with CPC.TAB.M.

Example: CPC combination sets of the member patent level

```

=> D MEMB
L1 ANSWER 1 OF 38166 WPIX COPYRIGHT 2019 CLARIVATE ANALYTICS on STN
Member(0001)
PI US 20180345739 A1 20181206 (201881)* EN 10[3]
TIEN PNEUMATIC TIRE COMPRISING OUTER APEX
IN HONDA S
    INO: HONDA, Shinichiro
    INA: Kobe-shi, JP
PA (SUMR-C) SUMITOMO RUBBER IND LTD
    PAO: SUMITOMO RUBBER INDUSTRIES, LTD.
.....
IPCI Current: B60C0015-06 [I,A]; C08L0007-00 [I,A]
    Original: B60C0015-06 [I,A]; C08L0007-00 [I,A]
CPC Current: B60C0001-00; B60C0015-0607; B60C2001-0058; C08K2201-014;
    C08K0003-04; C08K0007-06; C08L0021-00; C08L0007-00; C08K0007-06,
    C08L0021-00; C08K0003-04, C08L0021-00; C08K0003-04, C08K0007-06,
    C08L0007-00, C08L0009-06
    Original: B60C0015-0607; B60C2001-0058; C08L0007-00
ABEN The present invention provides a pneumatic tire that provides
    improved durability while maintaining or improving good handling
.....

=> D CPC.TAB.M
Member(0001)
CPC CODE          VERSION      POS  INV  CC  ASSIGNMENT  DATE      STAT
-----
Current
B60C0001-00      (20130101)  L   I   EP  Human      20180802  O
B60C0015-0607   (20130101)  F   I   EP  Human      20181206  O
B60C2001-0058   (20130101)  L   A   EP  Human      20181206  O
C08K2201-014    (20130101)  L   A   EP  Human      20180817  O
C08K0003-04     (20130101)  L   I   EP  Human      20180731  O
C08K0007-06     (20130101)  L   I   EP  Human      20180817  O
C08L0021-00     (20130101)  L   I   EP  Human      20181208  O
C08L0007-00     (20130101)  L   I   EP  Human      20181206  O
C08K0007-06     (20130101)  L   I   EP  Human      20180817  O,
C08L0021-00     (20130101)  L   I   EP  Human      20180817  O.
C08K0003-04     (20130101)  L   I   EP  Human      20180817  O,
C08L0021-00     (20130101)  L   I   EP  Human      20180817  O.
C08K0003-04     (20130101)  L   I   EP  Human      20180817  O,
C08K0007-06     (20130101)  L   I   EP  Human      20180817  O,
C08L0007-00     (20130101)  L   I   EP  Human      20180817  O,
C08L0009-06     (20130101)  L   I   EP  Human      20180817  O.
Original
B60C0015-0607   (20130101)  F   I   US  Human      20181206  O
B60C2001-0058   (20130101)  L   A   US  Human      20181206  O
C08L0007-00     (20130101)  L   I   US  Human      20181206  O
.....

```

Use the **MEMB** display format to view all individual publications with original title, abstract and claim(s)

Comb. Set 1
Comb. Set 2
Comb. Set 3

USEFUL LINKS

Implementation of the CPC in WPINDEX/WPIDS/WPIX on STN

www.stn-international.de/fileadmin/be_user/STN/pdf/search_materials/patents/CPC_DWPI_News_201304.pdf

Background information from EPO on CPC combination sets

www.cooperativepatentclassification.org/publications/CpcCSETS.pdf