

DWPIM (Derwent Markush Resource)

Subject Coverage	<ul style="list-style-type: none"> Organic and organometallic compounds Inorganic compounds, polymers, peptides and partially defined structures
File Type	Markush Structures
Access	The file is only available on STNnext
Features	<p>Alerts (SDIs) Monthly, weekly, or with each update (2 updates per week) (every update is the default)</p> <p>CAS Registry Number® Identifiers <input type="checkbox"/> Page Images <input type="checkbox"/></p> <p>Keep & Share <input type="checkbox"/> SLART <input type="checkbox"/></p> <p>Learning Database <input type="checkbox"/> Structures <input checked="" type="checkbox"/></p>
Record Content	<ul style="list-style-type: none"> Markush structures from approx. 890,000 Derwent World Patents Index (DWPI) documents
File Size	<ul style="list-style-type: none"> More than 2.3 million records (08/2020)
Coverage	1961 to date
Updates	104 times a year
Language	English
Database Producer	<p>Clarivate Friars House, 160 Blackfriars Rd. London SE1 8EZ United Kingdom</p> <p>Copyright Holder: Clarivate</p>
Sources	For patents included in Derwent World Patents Index, DWPI Markush includes indexed structures from claims, examples, disclosure
User Aids	<ul style="list-style-type: none"> Derwent Markush Resource on STN – Reference Manual Building and Searching Structures on STN Online Helps (HELP DIRECTORY lists all help messages available) STNGUIDE
Cluster	DWPIM is not available in any cluster
Related Databases	WPIDS/WPINDEX/WPIX

Search and Display Field Codes

Search Field Name	Search Code	Search Examples	Display Codes
Accession Number Entry Date Markush Descriptor	/AN /ED /MDE	S 9925-IWL05/AN S 20151029/ED S S/MDE S SINGLE SPECIFIC STRUCTURE/MDE	AN ED MDE
Patent Number/Kind Code Substance Descriptor (default)	/PNK /SDM	S N/SDM S NATURAL POLYMERS/SDM	PNK SDM
Update Date	/UP	S UP=NOV 2017	UP

DISPLAY and PRINT Formats

Any combination of formats may be used to display or print answers. Multiple codes must be separated by spaces or commas, e.g., D L1 1-5 AN ED. The fields are displayed or printed in the order requested.

Hit-term highlighting is available for all fields. Highlighting must be ON during SEARCH to use the HIT, KWIC, and OCC formats.

Format	Content	Examples
AN ED MDE (1) PNK (1) SDM	Accession Number Entry Date Markush Descriptor Patent Number/Kind Code Substance Descriptor	D AN D ED D MDE D PNK D SDM
ALL (FULL) IALL (IFULL) ASB (STD, IDE) IASB (ISTD) BRIEF SCAN TRIAL (TRI, SAMPLE, SAM)	AN, SDM, STR, ED, UP (ALL is default) (complete Markush structure) ALL, indented with text labels (complete Markush structure) Assembled hit structure including parts of the MARKUSH structure that match the query structure ASB, indented with text labels Unassembled hit Markush base structure with complete hit G-groups related to the query SDM, ASB, ED, UP (random display, no answer numbers) SDM, ASB, ED, UP	D ALL D IALL D ASB D IASB D BRIEF D SCAN D TRIAL
HIT KWIC OCC	Hit term(s) and field(s) Up to 50 words before and after hit term(s) (KeyWord-In-Context) Number of occurrences of hit term(s) and field(s) in which they occur	D HIT D KWIC D OCC

(1) Custom display only.

Structure Searching

Terms	Search Examples
L-numbers of structures built using the STRUCTURE editor in STNext	SEARCH L1 SSS SAM S L1 SSS FULL

Types of Structure Searching

Type	Definition	Search Code	Search Examples
Substructure (default)	Search for substances which match the query. Substitution is allowed at all open positions. Additional components may be retrieved.	SSS	SEARCH L1 SSS S L2 OR L3 SSS S L7 SSS
Closed Substructure	Search for substances which match the query exactly. Substitution is allowed at positions opened by CONNECT. Additional components may be retrieved.	CSS	SEARCH L1 CSS S L2 NOT L3 CSS S L4 OR L5 CSS

Scopes of Structure Searching

Scope	Definition	Search Code	Search Examples
Full Sample (default)	Search 100% of the file Search a fixed 10% of the file (a maximum of 50 records displayed)	FUL SAM	S L5 OR L8 SSS S L6 SSS SAM

Limiting Search Codes

Only an L-number for an answer set created in DWPIM may be limited.

Search Field Name	Search Code	Search Examples	Display Codes
Answers completely iterated Answers incompletely iterated	/COM /INC	S L4/COM S L4/INC	Not displayed Not displayed

DWPIM**SELECT, ANALYZE, and SORT Fields**

The SELECT command is used to create E-numbers containing terms taken from the specified field in an answer set.

The ANALYZE command is used to create an L-number containing terms taken from the specified field in an answer set.

The SORT command is used to rearrange the search results in either alphabetic or numeric order of the specified field(s).

Field Name	Field Code	ANALYZE/ SELECT (1)	SORT
Accession Number	AN	Y (default)	Y
Entry Date	ED	Y	Y
Markush Descriptor	DE	Y	Y
Patent Number/Kind Code	PNK	Y	N
Substance Descriptor	SDM	Y	Y
Update Date	UP	Y	Y

Crossover from DWPIM to WPIX, WPIDS, or WPINDEX

The crossover from DWPIM results to WPIX, WPIDS or WPINDEX is established by performing a search of the respective DWPIM L-number in WPIX respectively WPIDS or WPINDEX.

```
=> FIL DWPIM
=> S L-number search type (e.g. L1 sss ful)
=> FIL WPIX
=> s L-number
=> d L-number
```

The assembled display is the default display in WPIX. The commands for the assembled, brief and full hit structure in WPIX are as follows:

```
=> d L-number ahitstr
=> d L-number bhitstr
=> d L-number fhitstr
```

Crossover of Compounds from WPIX, WPIDS, or WPINDEX to DWPIM

Markush compounds from WPIX, WPIDS or WPINDEX records can be extracted and displayed in DWPIM by applying the transfer command. It is important to note that this step requires a reassignment of compound suffix MCN to AN.

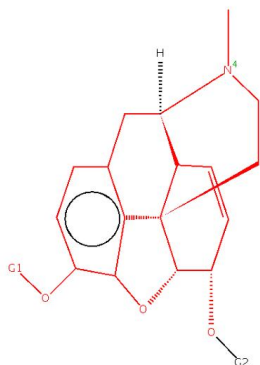
The workflow is described in the following:

```
Fil DWPIM
Tra L-number WPIX record [range] MCN /AN
Example: Tra L1 1-3 MCN /AN
```

SAMPLE Record**DISPLAY ALL**

AN 2091-38502 DWPIIM

SDM B: Pharmaceuticals, Agrochemicals; V: Simple organic compounds; Y: Mixtures



G-GROUP 1

H C XX

G-GROUP 2

H C XX

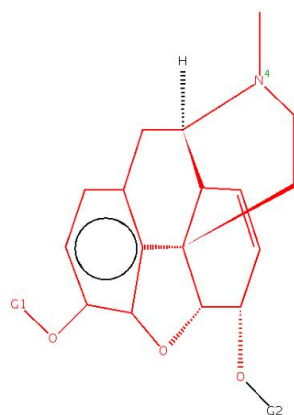
ED 20180409

UP 20180409

DISPLAY BRIEF

AN 2091-38502 DWPIIM

SDM B: Pharmaceuticals, Agrochemicals; V: Simple organic compounds; Y: Mixtures



G-GROUP 1

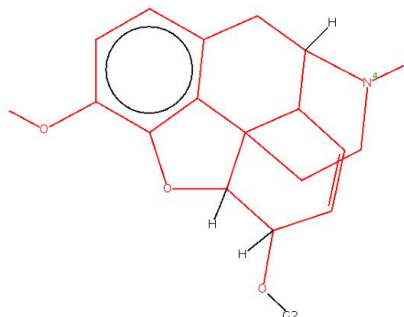
H C XX

ED 20180409

UP 20180409

6
DWPIM
DISPLAY ASB

AN 2091-38502 DWPIM
SDM B: Pharmaceuticals, Agrochemicals; V: Simple organic compounds; Y:
Mixtures



ED 20180409
UP 20180409

In North America
CAS
STN North America
P.O. Box 3012
Columbus, Ohio 43210-0012 U.S.A.

CAS Customer Center:
Phone: 800-753-4227 (North America)
614-447-3700 (worldwide)
Fax: 614-447-3751
E-mail: help@cas.org
Internet: www.cas.org

In Europe
FIZ Karlsruhe
STN Europe
P.O. Box 2465
76012 Karlsruhe
Germany
Phone: +49-7247-808-555
Fax: +49-7247-808-259
E-mail: helpdesk@fiz-karlsruhe.de
Internet: www.stn-international.com

In Japan
JAICI (Japan Association for
International Chemical Information)
STN Japan
Nakai Building
6-25-4 Honkomagome, Bunkyo-ku
Tokyo 113-0021, Japan
Phone: +81-3-5978-3601 (Technical Service)
+81-3-5978-3621 (Customer Service)
Fax: +81-3-5978-3600
E-mail: support@jaici.or.jp (Technical Service)
customer@jaici.or.jp (Customer Service)
Internet: www.jaici.or.jp