



TRANSFER Command on STNext®

Jim Brown

What is TRANSFER?

- A way to extract terms from a set and search them
- Extract from one field or multiple fields
 - Up to 50,000 terms
- You can search them in the same field or a different field
- Search the terms in the same database or in a different database



How to use TRANSFER

- Enter database in which the search is to be conducted
- Novice Mode – TRANSFER
 - Put in L-number answer set of interest
 - The field code of the info you wish to extract
 - Answer numbers
- Expert Mode – TRA Lx *field code answer number(s)*
- HELP EFIELDS for list of valid extraction fields in that

TRANSFER Example – Within the same database

=> FILE WPINDEX

```
L1 ANSWER 1 OF 1 WPINDEX COPYRIGHT 2021 CLARIVATE ANALYTICS on STN
PI KR 2019101925 A 20190902 (201970)* KO 51[21]
US 20200033147 A1 20200130 (2020010) EN
KR 2195935 B1 20201230 (2021004) KO
TI Method for the route determination for the autonomous vehicle, involves
providing a server for determining the driving mode and the path in
consideration of the communication environment, and first data is received
for a starting location
IPCI B60K0035-00 [I,A]; B60K0035-00 [I,A]; B60W0030-14 [I,A]; B60W0030-14
[I,A]; B60W0030-18 [I,A]; B60W0030-18 [I,A]; B60W0030-182 [I,A];
B60W0030-182 [I,A]; B60W0050-08 [I,A]; B60W0050-08 [I,A]; B60W0050-14
[I,A]; B60W0050-14 [I,A]; G01C0021-34 [I,A]; G01C0021-36 [I,A];
G05D0001-00 [I,A]; G05D0001-00 [I,A]; G05D0001-02 [I,A]; G05D0001-02
[I,A]; H04W0004-40 [I,A]
CPC B60W0030-14; B60W0030-181; B60W0030-182; B60W0050-082; B60W0050-14;
G01C0021-3415; G01C0021-3415; G01C0021-3667; G01C0021-3697; G05D0001-0011;
G05D0001-0061; G05D0001-0088; G05D0001-0088; G05D0001-0212; G05D0001-0276;
G05D0001-0285; H04W0004-40
```

WPINDEX sample record
with IPCS and CPCs of
interest.

TRANSFER Example – Within the same database

=> TRA L1 IPC CPC 1-

L2 TRANSFER L1 1- IPC CPC : 26 TERMS

L3 157330 L2

ALL TERMS IN L2 RETRIEVED.

=> D TI IPC CPC 1-2

L3 ANSWER 1 OF 157330 WPINDEX COPYRIGHT 2021 CLARIVATE ANALYTICS on STN

TI System for assisting potential home buyer by selecting and displaying various properties, has processor which generates route for viewing modified pool of homes, and display route using interactive graphical display

IPCI **G01C0021-36** [I,A]; G06Q0030-06 [I,A]; G06Q0040-02 [I,A]; G06Q0050-16 [I,A]

CPC G01C0021-3644; G06Q0030-0643; G06Q0040-025; G06Q0050-16

L3 ANSWER 2 OF 157330 WPINDEX COPYRIGHT 2021 CLARIVATE ANALYTICS on STN

TI Method for monitoring intensification of tropical cyclone e.g tropical storm, involves determining whether tropical cyclone is strengthening or weakening based on meteorological conditions and structure parameters when nascent formation of eye is detected

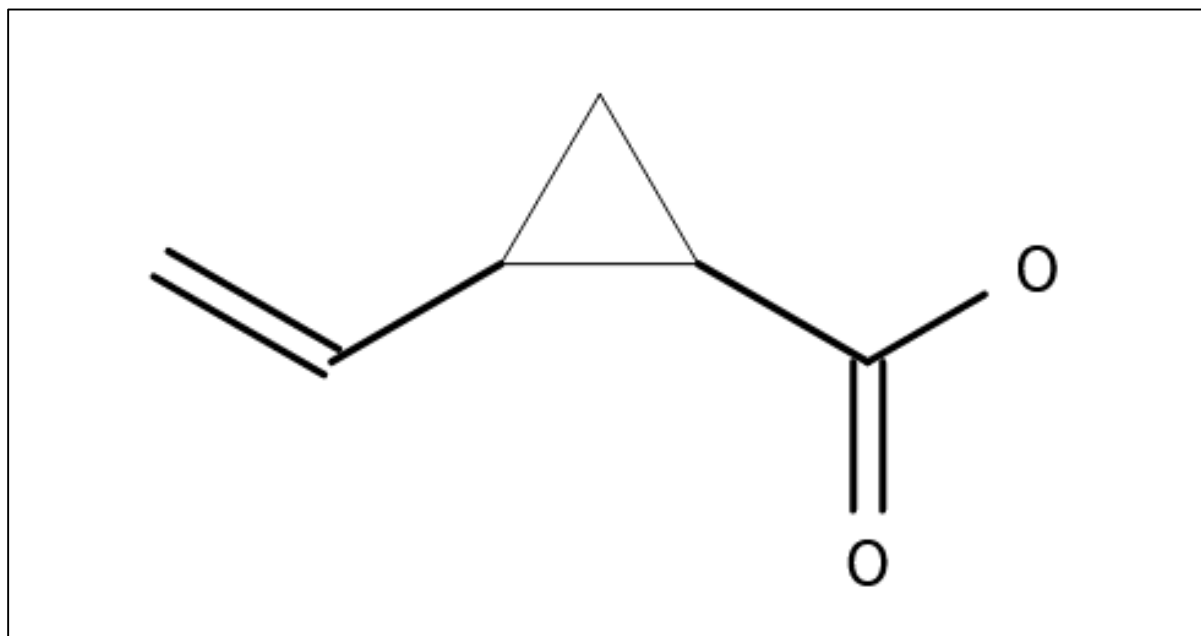
IPCI B64C0039-02 [I,A]; G01W0001-02 [I,A]; G01W0001-08 [I,A]; **G05D0001-00** [I,A]

CPC B64C2201-125; B64C2201-127; B64C0039-024; G01W0001-02; G01W0001-08;
G05D0001-0094

TRANSFER Example – across multiple databases

Search Question

Find U.S. patent documents that contain compounds containing the following substructure. Limit that search to only documents that discuss the particle size in the range of 1-500 nm. Make sure those documents have not been withdrawn (published applications) or lapsed (granted patents.)



TRANSFER Example – Across multiple databases

- Perform substructure search in DCR
- Find DWPI patent families that have DCRs indexed
- Search in U.S. full-text patent databases for particle size info using Numeric Property Searching
- Search in INPADOCDB for certain legal status actions

Note: This is not a comprehensive search, but illustrates how to move across multiple databases to make advantage of unique information in different databases.

Draw structure using STN Structure Editor

=> **FILE WPINDEX**

Structure Editor - Permethrin derivatives

Draw or change atoms or bonds. Shortcut Keys

Enter a CAS RN, SMILES or InChI

Attribute Values

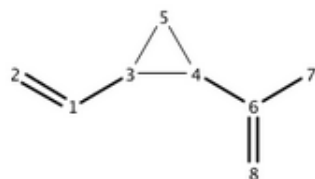
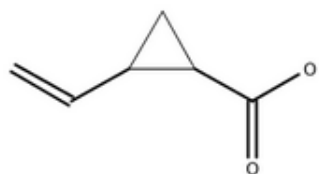
- Bond Type**
 - Chain
 - Ring
 - Ring / Chain
- Bond Value**
 - Exact
 - Normalized
 - Exact / Normalized
- Node Type**
 - Chain
 - Ring
 - Ring / Chain
- Generic Definition**
 - Saturated / Unsaturated
 - Linear / Branched
 - Monocyclic / Polycyclic
 - 1 hetero atom / 2+ hetero atoms
 - 1-6 carbons / 7+ carbons
- Match Level**
 - Atom
 - Class
 - Any
- Element Count Level**
 - Limited
 - Unlimited
- Other Node Attributes**
 - Mass
 - Valency
 - Hydrogen Count
 - Non-Hydrogen Count
 - Element Count

C₆H₈O₂ (112.13) 200%

Upload Save As Cancel

Upload structure, run substructure search; find corresponding patent families with U.S. members

Uploading structure file: Permethrin derivatives



Node Attributes
Ring Nodes : 3 4 5
Chain Nodes : 1 2 6 7 8
Bond Attributes
Ring Bonds : 3-4 3-5 4-5
Chain Bonds : 1-2 1-3 4-6 6-7 6-8
Exact Bonds : 1-2 1-3 4-6
Exact/Normalized Bonds : 3-4 3-5 4-5 6-7 6-8
Markush Attributes
Match Level (ATOM) : 3 4 5
Match Level (CLASS) : 1 2 6 7 8
Element Count Level (LIMITED) : 1 2 3 4 5 6 7 8

L4 STRUCTURE UPLOADED

=> S L4 SSS FULL

FULL SEARCH INITIATED 22:14:43

FULL SCREEN SEARCH COMPLETED - 7495 TO ITERATE

100.0% PROCESSED 7495 ITERATIONS

1823 ANSWERS

SEARCH TIME: 00.00.01

L5 1823 SEA SSS FUL L4

=> S L5/DCR AND US/PC

8682 L5/DCR

8866186 US/PC

L6 1911 L5/DCR AND US/PC

Move into USPATALL cluster, TRANSFER PN WITH "US"

=> FILE USPATALL

=> TRA L6 PN WITH "US" 1-

SELECT IS APPROXIMATELY 26% COMPLETE
SELECT IS APPROXIMATELY 48% COMPLETE
SELECT IS APPROXIMATELY 73% COMPLETE

L7 TRANSFER L6 1- PN WITH "US" : 3375 TERMS

SEARCH OF L7 IS APPROXIMATELY 87% COMPLETE

L8 2439 FILE USPATFULL

SEARCH OF L7 IS APPROXIMATELY 98% COMPLETE

L9 14 FILE USPATOLD

SEARCH OF L7 IS APPROXIMATELY 92% COMPLETE

L10 930 FILE USPAT2

TOTAL FOR ALL FILES

L11 3383 L7

ALL TERMS IN L7 RETRIEVED.

Using TRANSFER PN WITH "US" extracts only patent numbers with US in the PN data field; no other patent numbers are extracted.

Run Nuemric Property Search in USPATALL cluster

```
=> S L11 AND (PARTICLE (5A) SIZE)/CLM (10A) 1-500 NM/SIZ
```

```
L12          72 FILE USPATFULL
```

```
'SIZ' IS NOT A VALID FIELD CODE
```

```
L13           0 FILE USPATOLD
```

```
L14          15 FILE USPAT2
```

```
TOTAL FOR ALL FILES
```

```
L15          87 L11 AND (PARTICLE (5A) SIZE)/CLM (10A) 1-500 NM/SIZ
```

Note: USPATOLD does not have Numeric Property Searching capabilities so these records should be looked at separately.

KWIC display

=> D KWIC 1-2

L15 ANSWER 1 OF 87 USPATFULL on STN

CLM What is claimed is:

. . . an organic solvent carrier having low aromatic content; b. a dispersion of solid particles of a metal compound having a **particle size** between about 0.**005** microns to about 10 microns; c. an organic biocide; and d. a dispersant.

CLM What is claimed is:

. . . of vegetable oil, renewable resource oil, and biodiesel; b. a dispersion of solid particles of a metal compound having a **particle size** between about 0.**005** microns to about 10 microns; c. an organic biocide; and d. a dispersant.

L15 ANSWER 2 OF 87 USPATFULL on STN

CLM What is claimed is:

2. The pesticidal composition of claim 1, wherein an average **particle size** is less than about 0.**5** μm .

CLM What is claimed is:

10. The pesticidal composition of claim 9, wherein the average **particle size** is less than about **150** microns after mixing with the liquid fertilizer.

TRANSFER WITH "US" into INPADOCDB, search FIZ generated legal status categories

=> FILE INPADOCDB

=> TRA L15 PN WITH "US" 1-

L16 TRANSFER L15 1- PN WITH "US" : 89 TERMS

L17 75 L16

ALL TERMS IN L16 RETRIEVED.

=> S L17 AND ((EXP OR LAP OR LIM OR WTH) NOT REI)/LSC2

1591654 EXP/LSC2

17624197 LAP/LSC2

76109 LIM/LSC2

17667207 WTH/LSC2

333283 REI/LSC2

L18 46 L17 AND ((EXP OR LAP OR LIM OR WTH) NOT REI)/LSC2

=> S L17 NOT L18

L19 29 L17 NOT L18

Summary

- TRANSFER is a way to extract terms from a set and search them
 - Search the terms in the same database or in a different database
- The searcher can limit the terms extracted with TRANSFER by using WITH ""
- Allows the searcher to efficiently move from one database to another database
 - Use multiple databases to search unique information



Contact Us



CAS help@cas.org
www.cas.org

FIZ Karlsruhe helpdesk@fiz-karlsruhe.de
www.stn-international.de